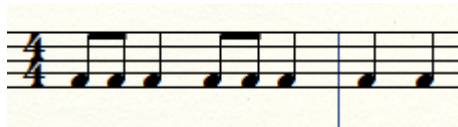


STRICTLY BALLROOM UNIT

- **Waltz:** ballroom and folk dance from 16th Century – simple triple time (**3 beats in a bar**)



- **Jive:** ballroom dance from US African-Americans in 1940s – simple duple time (**4 beats in a bar**)



- **Cha-cha:** Cuban dance from 19th Century – simple duple time (**4 beats in a bar**)

